

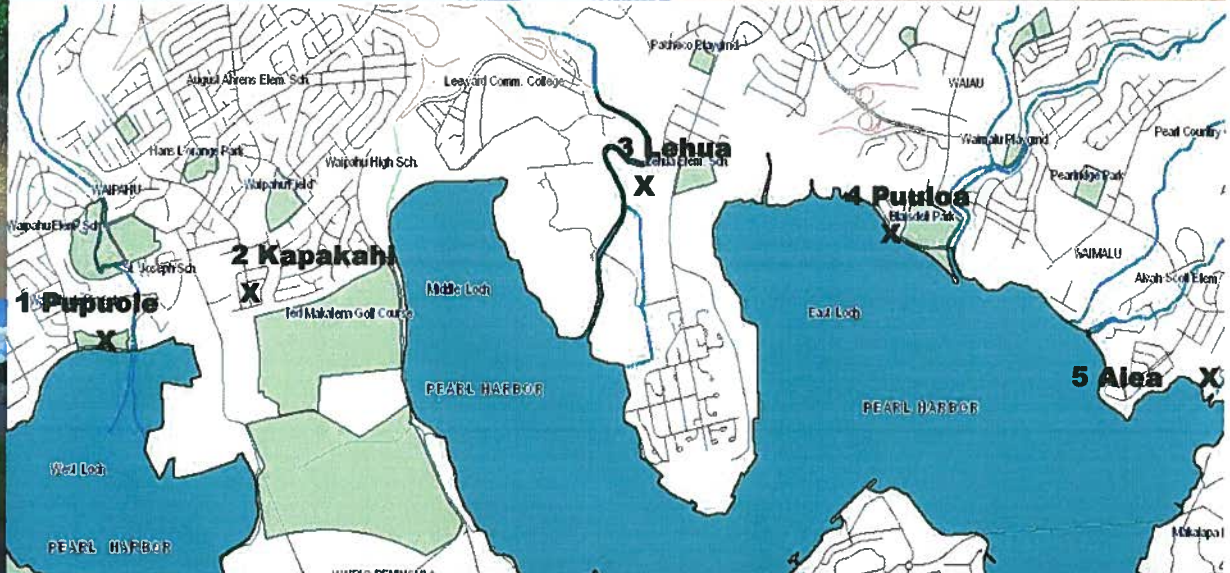
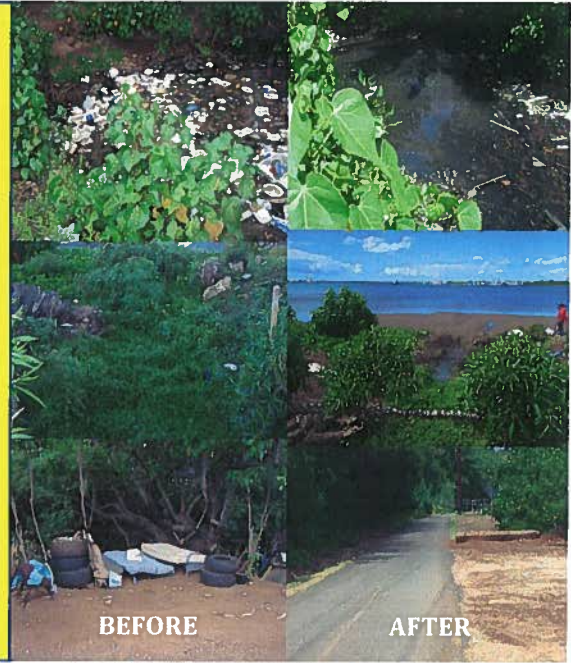
VOLUNTEERS AND ADOPTERS MAKE A DIFFERENCE

COME AND GET INVOLVED!!!

What: Pearl Harbor Bike Path Clean Up Event
When: Saturday, November 3, 2012 from 8:30am to 11:00am.
Where: Meet at different locations:
1) Pupuole Mini Park Area
2) Kapakahi Stream along Waipahu Depot Road
3) Lehua Avenue across Lehua Elementary
4) Puuloa Stream near Neal Blaisdell Park
5) Aiea Bay Park/McGrew Point

Work to include cleaning:

- Pupuole Park, surrounding area, and drainage ditch.
- Kapakahi Stream, Pouhala Marsh and drainage ditch across HFD.
- bike path near Lehua Elementary and graffiti removal.
- Neal Blaisdell park, weed and mulch at Puuloa Stream
- Heavy trash and debris along bike path from Aiea Bay Park to Neal Blaisdell Park



Volunteers and Partnerships
Builds relationships & creates healthy communities
Develops environmental stewardship
Provides skill building and learning
Strengthens neighborhoods

For more information please contact SWQ Coordinator,
 Ping at 768-3245 or e-mail at pquindica@honolulu.gov

