

NASED Master Plan and the DEIS

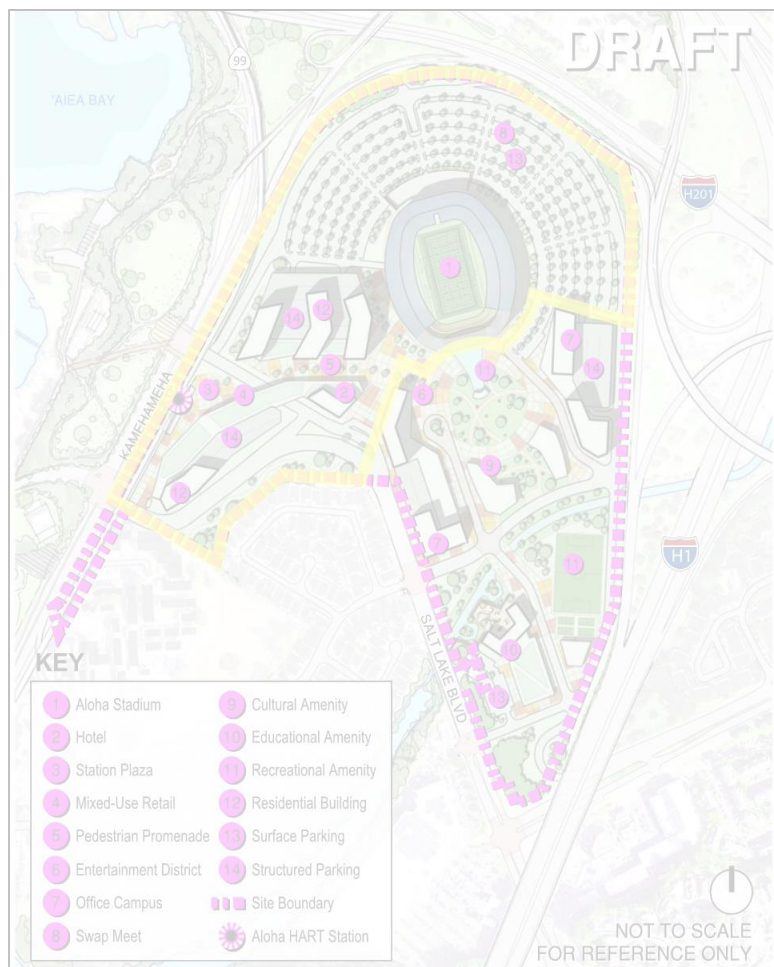
Aiea Community Association
November 16, 2020

NASED Mission

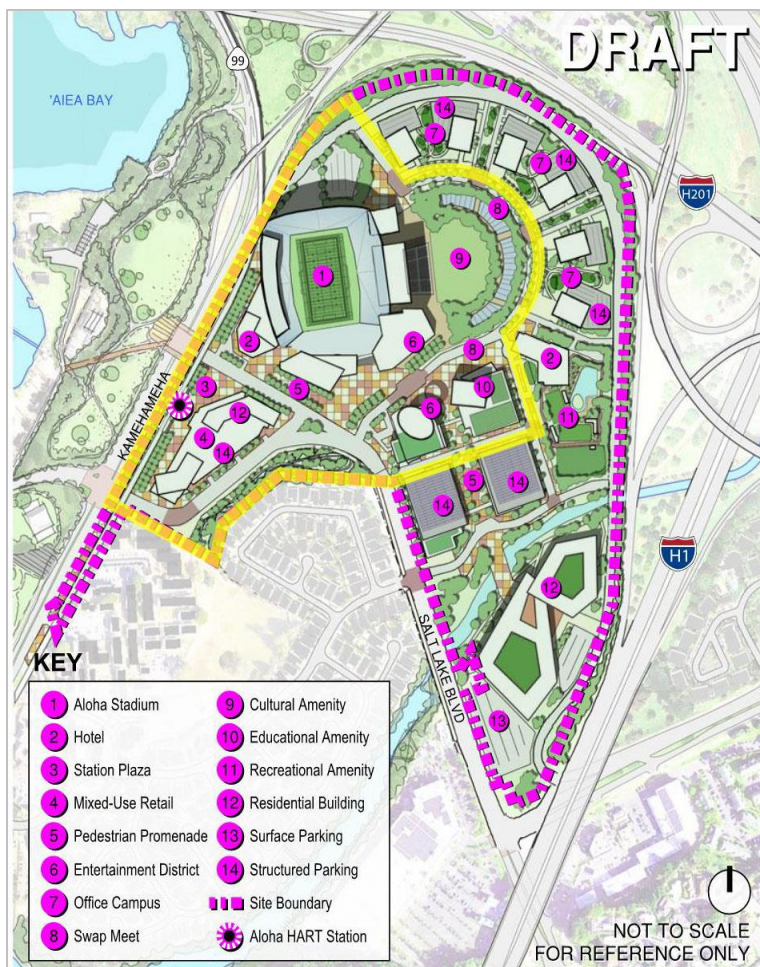
Through robust market assessment and industry engagement, and a considered phased approach, the NASED Program will deliver a world class and community-centric mixed use district, with an emphasis on developing tourism and entertainment opportunities, anchored by a new sports and entertainment venue that catalyzes ongoing successful development of the district for the benefit of the State of Hawai‘i.

NEW
**ALOHA
STADIUM**
ENTERTAINMENT DISTRICT

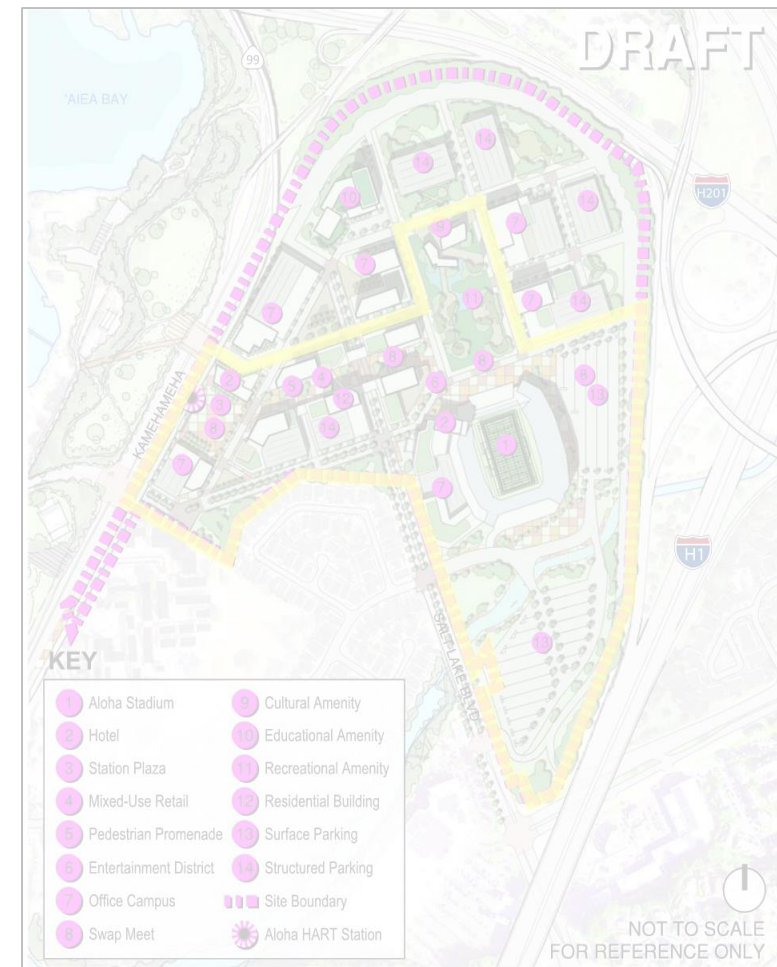
Site Concepts



Option A

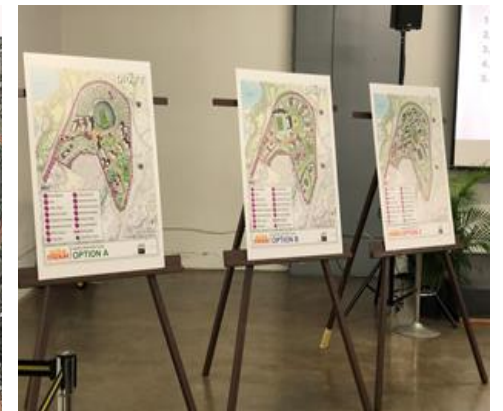


Option B



Option C

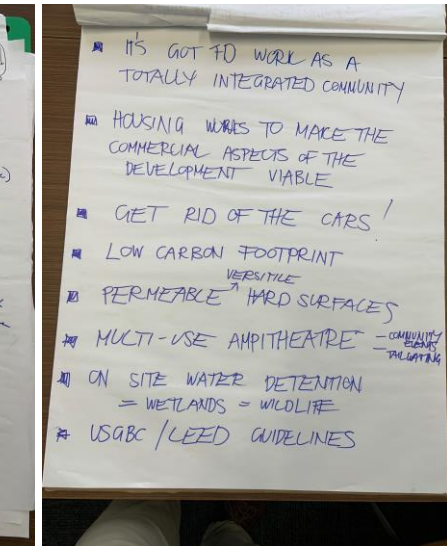
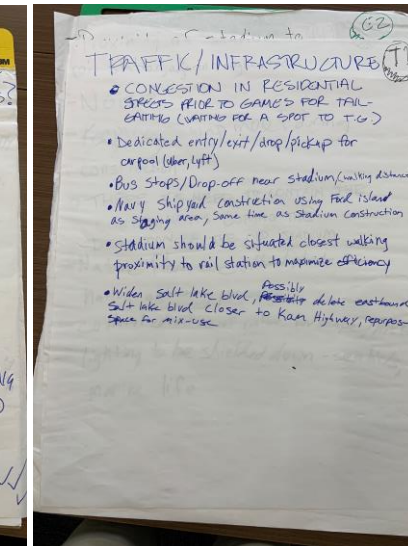
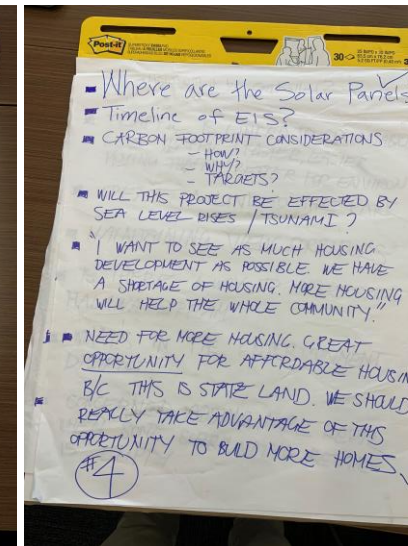
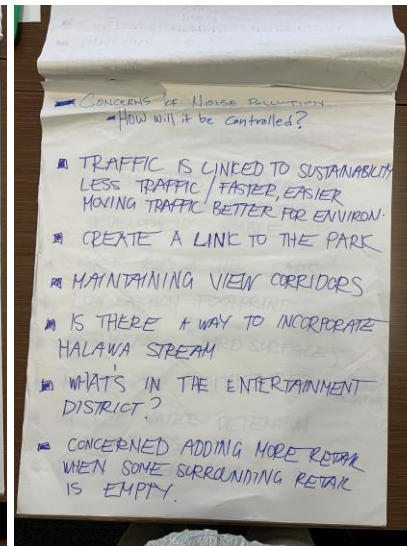
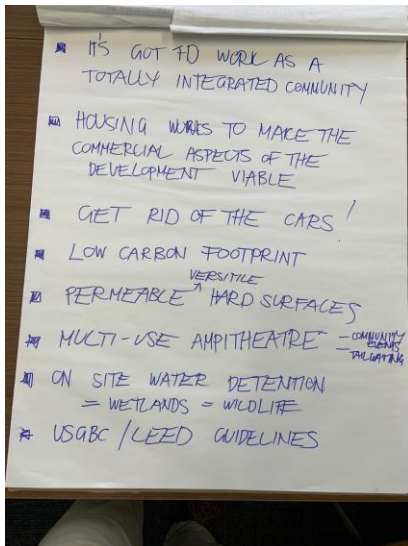
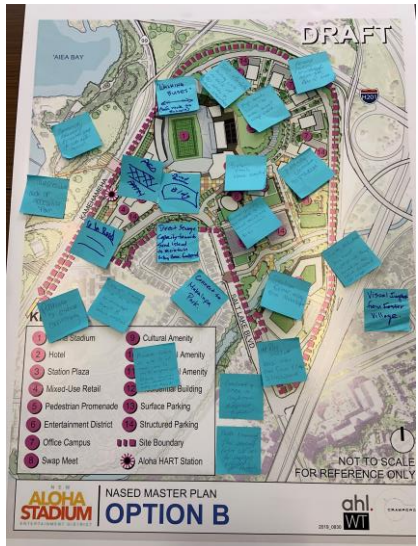
Community Outreach



Community Outreach

Roundtable discussion was recorded both by the public who were provided ample writing utensils and post-it notes as well as by designated scribes at each table

- Below is the record of the “Environmental and Sustainability, Surrounding Community” table from the Master Planning Community Workshop



Meeting Summary:

Traffic Impacts

- Concern about increased traffic
- Need to widen Salt Lake Blvd.
- Bike, Rail, and Pedestrian traffic must be integrated

Affordable Housing

- Space should be used for affordable housing
- There should be more affordable housing than hotels

Recreational Opportunities

- Desire for open space
- Story boards and/or mini museums for cultural education
- Bicycle friendly areas
- Multi-use parking lots

Stadium Capacity

- Concern with capping the capacity at 35,000 and recommended at least 40,000
- There should be expansion opportunities

Swap Meet

- Concern about the future of the Swap Meet
- Hundreds of vendors affected if closed

Environmental Concerns

- Importance of containing contaminants during demolition
- Dredge Halawa Stream

Communication and Transparency

- There should be better communication
- “Back and forth” creates confusion

Construction and Budgetary Concerns

- Must remain in budget
- Stadium should not be moved closer to housing
- Design to minimize rust

Master Planning Community Workshop

12/19/2019

Meeting Summary:

Traffic, Roads, Parking (Transportation Infrastructure)

- Adequate parking
- Noise protection
- Parking to accommodate tailgating/etc.
- Improve Traffic Flow
- Pedestrian access
- Affordable housing
- Greenspace
- Viewsheds

Site Program and Amenities, Recreation, Culture

- Activities for a wide range of users
- Connection to Pearl Harbor
- Retail at HART
- Bike friendly
- Include museum
- Create livable, connected community
- Affordable housing

Stadium Design and Events

- Proximity to rail
- Minimize noise
- Keep Swap Meet
- Manage dust/etc. during construction
- Use native flora
- Option C is too close to houses
- Pedestrian promenade
- Cultural education
- Mitigate light

Environmental and Sustainability, Surrounding Community

- Limit car use
- Lower carbon footprint
- Integrate permeable surfaces
- LEED builds
- Water retention
- Use solar panels
- Address climate change

Virtual Reality and Physical Model Station

- Affordable housing
- Create open spaces
- Maintain a sense of place
- Murals on buildings
- Consider outward as well as inward views
- Create plazas with field views

Master Planning Stakeholders Workshop

01/27/2020

Meeting Summary:

Traffic, Roads, Parking (Transportation Infrastructure)

- Improved space for Swap Meet
- Dedicated ride-share locations
- Tailgating space
- Bike friendly
- Quality asphalt
- Connectivity to rail
- Space for Swap Meet & State Fair
- Connect to H-1

Site Program and Amenities, Recreation, Culture

- Hawaiian design
- Permanent ATMs
- Swap meet needs to be on concrete
- Rest nodes and seating
- Add public restrooms
- Add lighting for early morning Swap Meet setup

Stadium Design and Events

- Space for marching band warmup
- Mix State Fair with amphitheater
- Rain shield
- Rugby field size
- Graduation logistics
- Improve lighting
- ADA compliance
- Permanent fair assets

Environmental and Sustainability, Surrounding Community

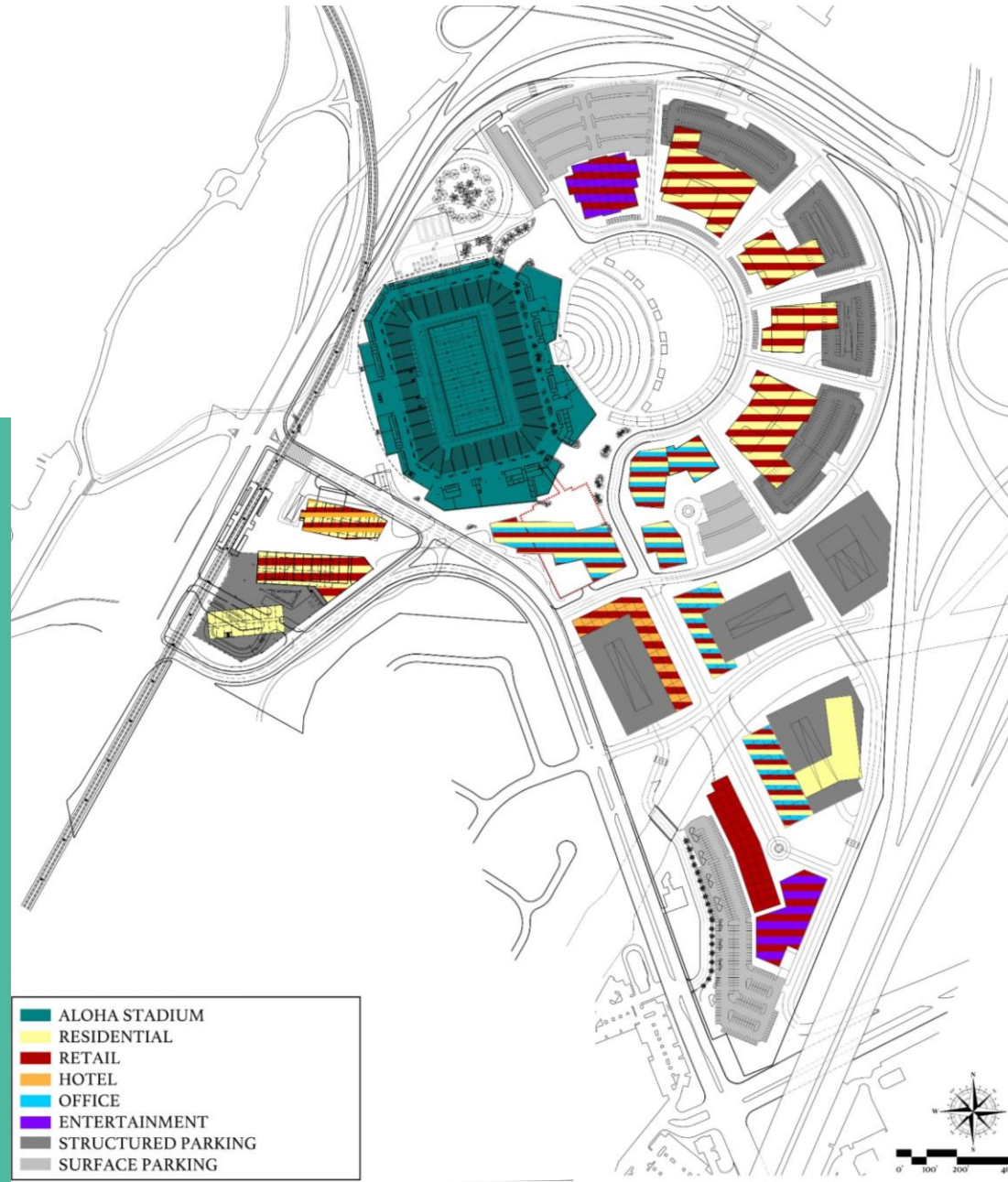
- No comments provided

Virtual Reality and Physical Model Station

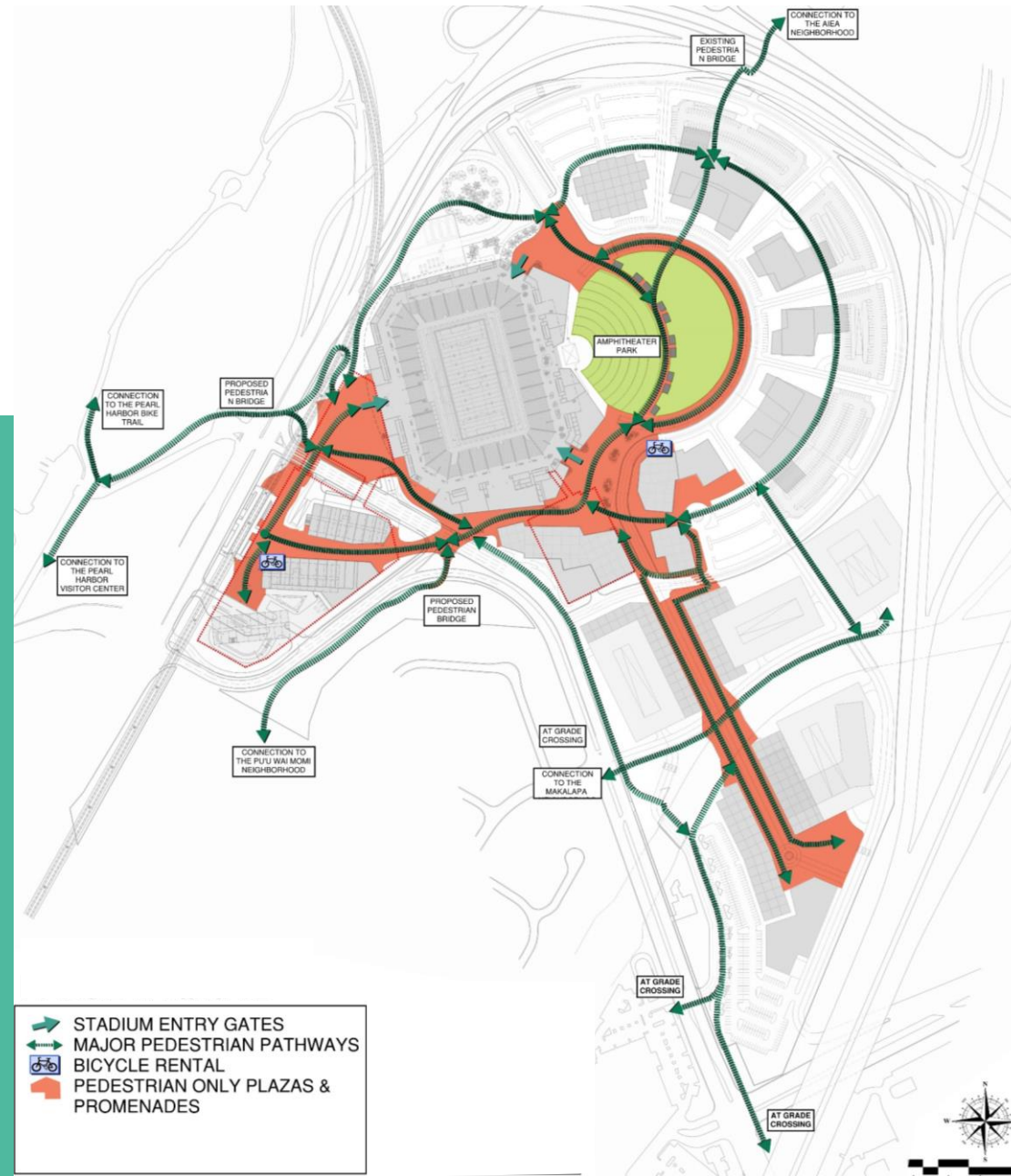
- No comments provided



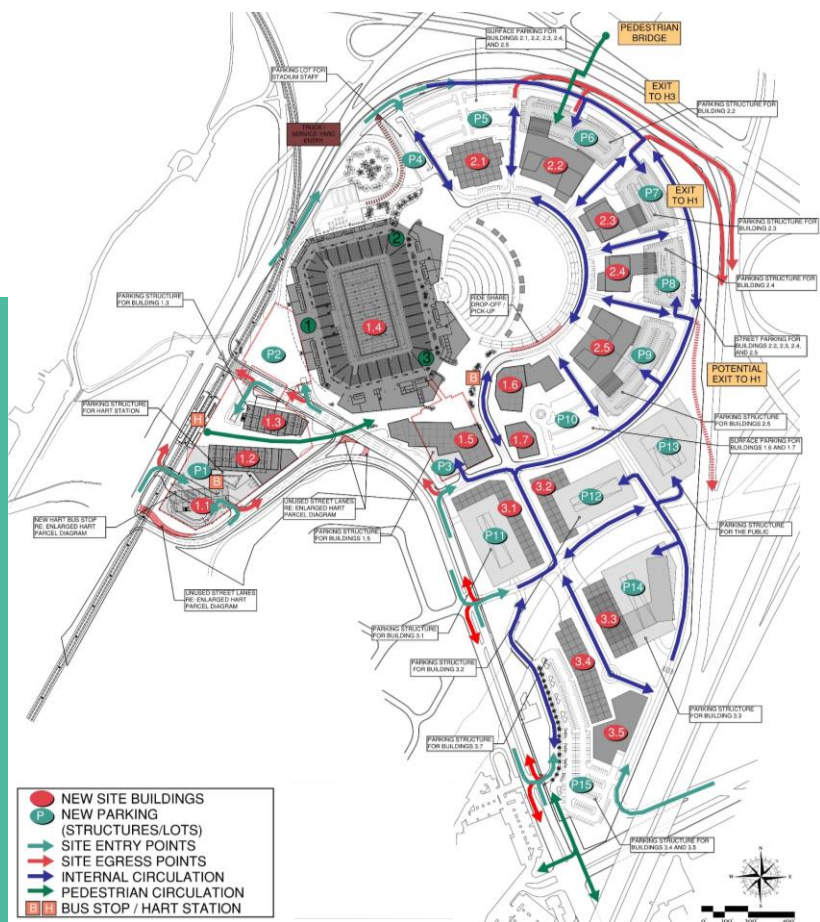
Programmatic Master Plan



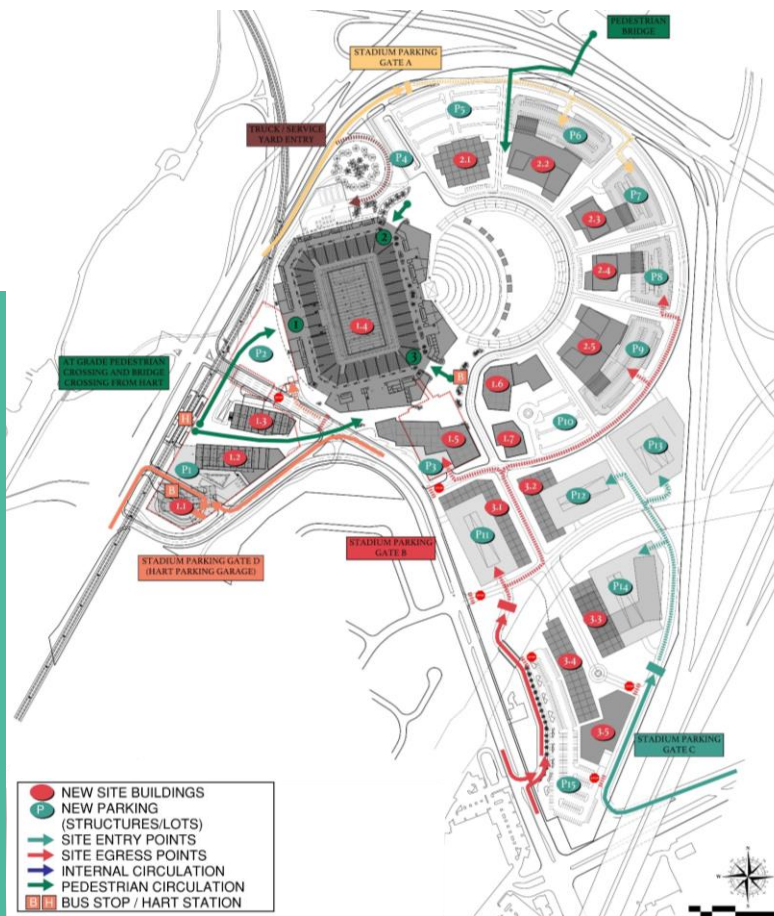
Land Use Plan



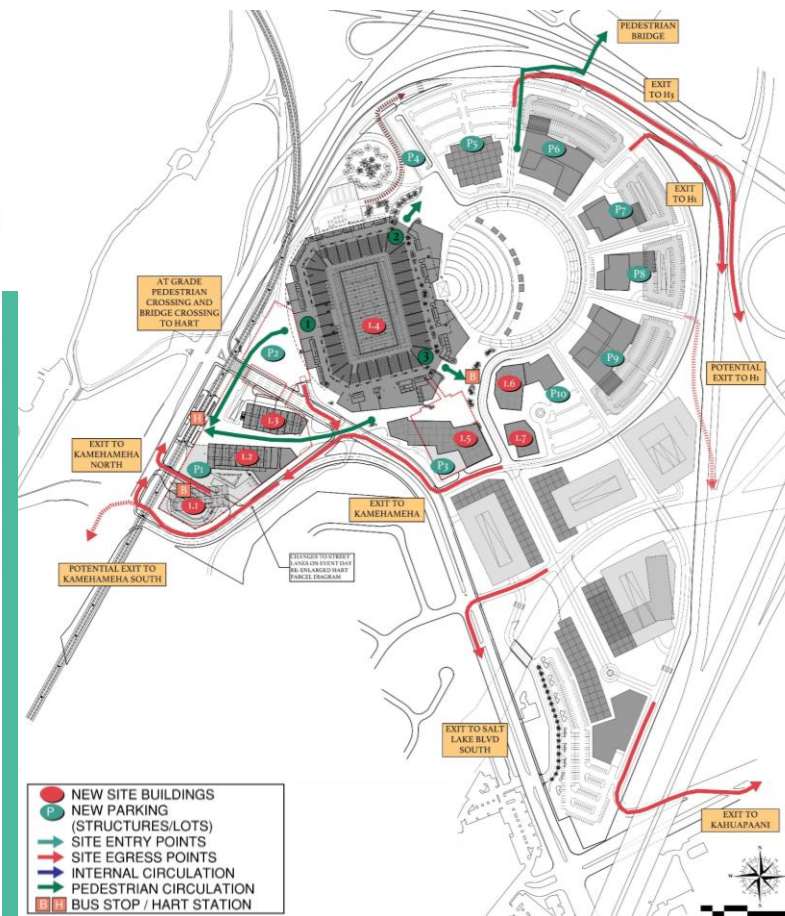
Pedestrian Space and Movement



Daily Use

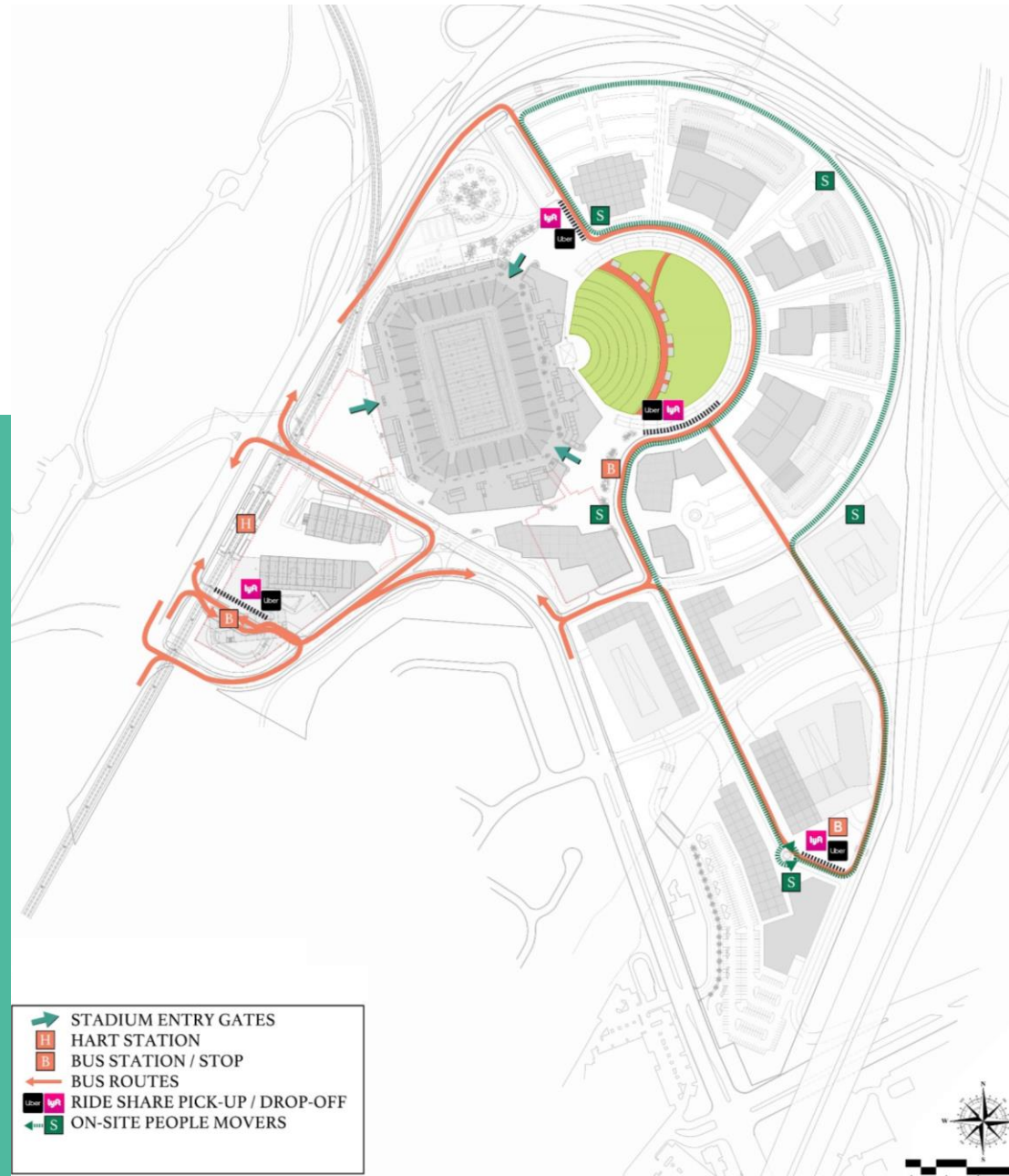


Event Day Ingress

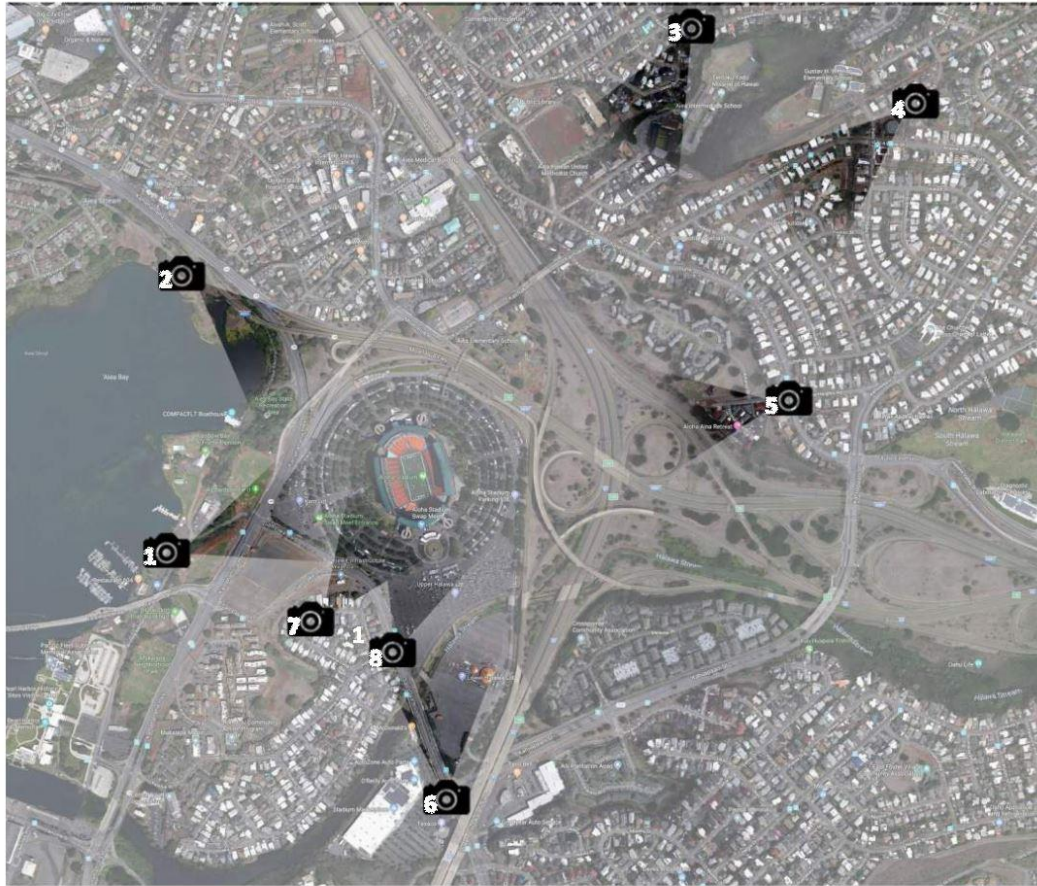


Event Day Egress

Traffic Study



Multi-modal Transportation



View Shed Study









An architectural rendering of the New Aloha Stadium Entertainment District. The image shows a large, modern stadium with a curved roof and a glass facade. In the foreground, there are several multi-story buildings with green roofs and modern architecture. The area is surrounded by landscaped grounds with palm trees and walkways. The overall scene is depicted in a dark, moody style with a greenish tint.

NEW ALOHA STADIUM ENTERTAINMENT DISTRICT

DRAFT PROGRAMMATIC
ENVIRONMENTAL IMPACT STATEMENT

November 2020



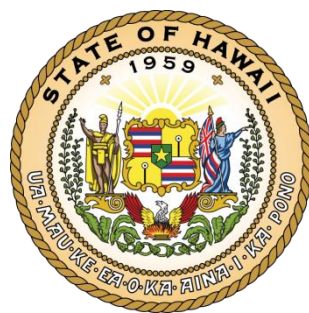
PREPARED FOR:
STATE OF HAWAII
DEPARTMENT OF ACCOUNTING AND GENERAL SERVICES

WILSON OKAMOTO CORPORATION | CRAWFORD ARCHITECTS

Draft Programmatic Environmental Impact Statement (DPEIS)



QUESTIONS AND ANSWERS



www.nased.hawaii.gov