



MARCH 2026 NEWSLETTER

## CELEBRATING HAWAI'I'S CULTURE BUILDING HAWAI'I'S FUTURE

Updates from Aloha Stadium and the New Aloha Stadium Entertainment District  
"Project Progress, Community Highlights and Marketplace News"

### MANAGER'S CORNER

#### MOVING FORWARD TOGETHER: NASED PROJECT UPDATE



Momentum remains strong for the New Aloha Stadium Entertainment District (NASED). In recent weeks the project has been featured in local news as progress continues on the redevelopment of the Aloha Stadium site and the long-term vision for a vibrant mixed-use district anchored by a new stadium.

At the state capitol, legislative discussions are also underway on several measures related to the future of the stadium district. Bills addressing topics such as digital signage and marketing opportunities within the Stadium Development District are being considered as part of efforts to ensure the long-term financial sustainability of the project.

Legislative discussions focusing on the housing component of the NASED project continue to move forward, which will include thousands of residential units planned over time to help address Hawai'i's housing needs.

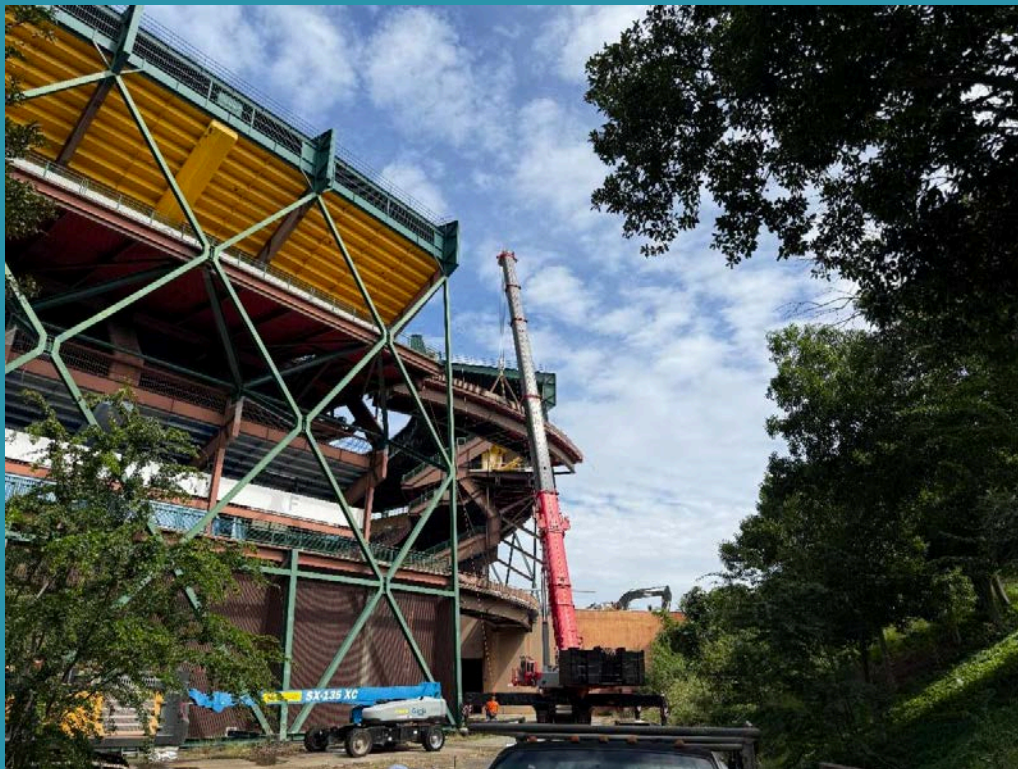
The district is envisioned as a transit-oriented community that will offer a mix of housing opportunities while supporting local businesses, open spaces, and neighborhood amenities. These efforts reflect ongoing collaboration between the State, the Legislature, Aloha Hālawā District Partners (AHDP) and community stakeholders to ensure the district develops in a way that benefits the broader community.

On the ground, work to dismantle the existing Aloha Stadium is progressing. To help safely and efficiently complete this phase of the project, some dismantling activities may take place on Saturdays in addition to the current weekday schedule. Our teams are working to minimize noise and dust as much as possible and appreciate the community's patience and understanding as this work continues.

Mahalo to our neighbors and community members for your continued support as we take these important steps toward the future of the new Aloha Stadium district.

If you have any questions or concerns please contact us at [alohastadium@hawaii.gov](mailto:alohastadium@hawaii.gov) or 808-483-2500.

*~Michael Yadao, Aloha Stadium Executive Director*



## ALOHA FROM AHDP

This week marked the beginning of major dismantling activities at the stadium site, beginning with crane operations to remove the pedestrian bridges surrounding the facility. These initial steps signal the transition from the stadium's historic past toward its new future.

Dismantling work will continue steadily over the next several weeks as crews carefully take apart sections of the existing structure. Throughout this process, the project team is prioritizing safety and minimizing impacts to the surrounding community. Measures are in place to reduce dust, noise and traffic disruptions during work. Dust control systems, monitored work schedules and coordinated traffic planning help ensure that the dismantling process is conducted responsibly and with respect for nearby residents and commuters.

While the stadium has been home to decades of unforgettable moments, this important milestone moves Hawai'i closer to a new stadium and vibrant district designed to serve the community for generations to come.

We look forward to sharing more updates ahead.

*\*Photo: crews dismantle pedestrian bridges at exterior of Aloha Stadium*

*Aloha Hālawā District Partners*

## HERE'S THE ANSWER

You asked — we're answering. "Here's the Answer" highlights common questions and provides clear updates you can trust.

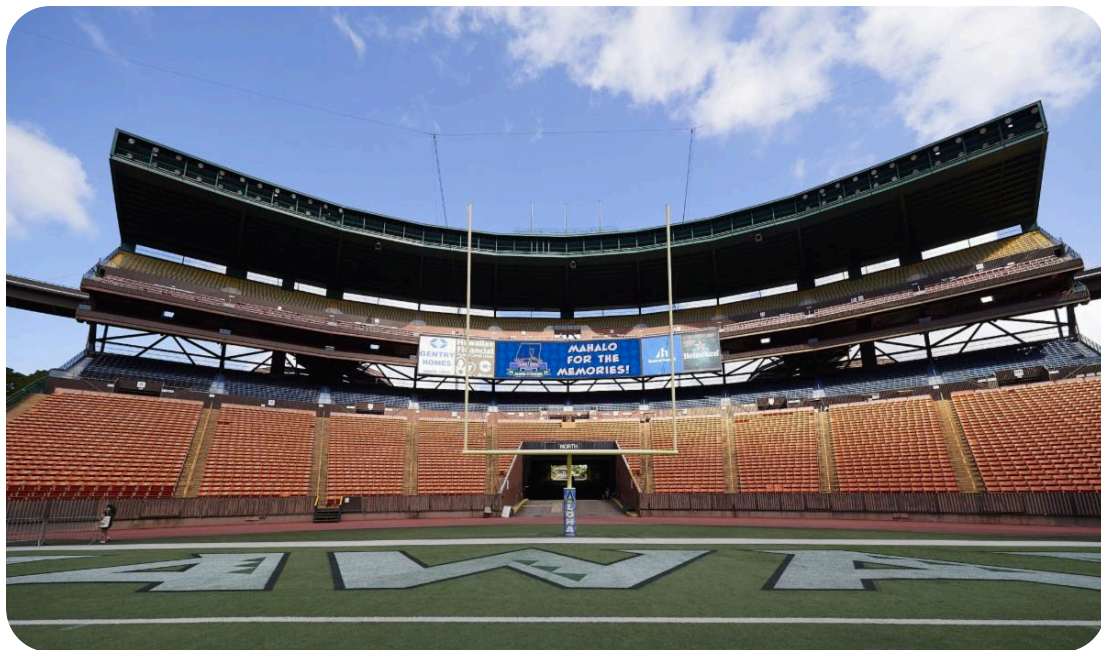
**Q:** Where can I learn more information and updates about the NASED project?

**A:** We've made it easier than ever to stay informed. The New Aloha Stadium Entertainment District (NASED) website ([nased.hawaii.gov](http://nased.hawaii.gov)) has officially merged with the Aloha Stadium website ([alohastadium.hawaii.gov](http://alohastadium.hawaii.gov)), bringing project updates, news and key information together in one convenient place. This new, streamlined online experience allows visitors to follow the latest progress, announcements and plans shaping the future of the new Aloha Stadium district.

We've also added a new [Construction Cam](#), where you can view weekly photo updates from the NASED project site and see the progress happening on the ground. Explore the updates and stay tuned as we continue moving forward.

For direct questions, residents may also reach out to us through our email at [alohastadium.hawaii.gov](mailto:alohastadium.hawaii.gov).

[Visit our Website](#)



## RECENT NEWS AND MEDIA HIGHLIGHTS

*A snapshot of recent news and media stories highlighting Aloha Stadium, our community partnerships and progress across the entertainment district.*

Stadium Authority Executive Director Mike Yadao joined Senator Glenn Wakai in a recent discussion highlighted by Honolulu Civil Beat about the future of the new Aloha Stadium and the potential role of naming rights as part of the project's funding strategy. The conversation reflects ongoing efforts to explore creative solutions as the state works toward building the new stadium in Hālawā.

[Read The Story](#)



## EXPLORE

Public parking is available through Hālawā Gate 3 (across from Ice Palace) with easy access via Kahuapaani Street.

\$2 general admission

\$1 for kama'āina and active-duty military

Free for keiki 11 yrs. and under.

## ENGAGE

Stay connected so you never miss Marketplace events, featured vendors and activities happening throughout the month.

## SPRING CLEANING AT THE MARKETPLACE

Spring is the perfect time to refresh, reorganize and make space for something new, and the Aloha Stadium Swap Meet & Marketplace is the place to do it. As the season of spring cleaning begins, shoppers can discover great deals from local vendors while also finding inspiration to clear out closets and give gently used items a second life.

Our Swap Meet vendors offer everything from vintage finds and handmade goods to household items and unique treasures waiting to be rediscovered. It's the perfect opportunity to shop sustainably, support local entrepreneurs and find those one of a kind pieces you didn't know you needed.

Thinking about cleaning out your own closet or garage? The marketplace also offers the opportunity to become a vendor for the day and turn your extra items into extra cash. Whether it's clothing, collectibles, home décor or hidden treasures, the Swap Meet provides a welcoming space for the community to buy, sell and connect.

This spring, come browse, bargain and breathe new life into old favorites at the Aloha Stadium Swap Meet & Marketplace, where every visit offers a chance to discover something new.

## PLAY

Grab a bite to eat at one of our food trucks and experience the heartbeat of Aloha at our Ho'okipa Hale Entertainment Stage and Food Court Tent, where local artists bring the spirit of Hawaii through music and dance.

## CONSTRUCTION PROGRESS



February 27, 2026



March 4, 2026



March 9, 2026



March 23, 2026

# Al Oha FROM HALAWA



### Meet Al Oha from Hālawā — Junior Site Helper of the Future Aloha Stadium

Aloha! My name is Al Oha and I live in Hālawā, the home of Aloha Stadium.

I'm very excited because something big is happening — a brand-new stadium and community district is being built! I decided I want to learn how everything works so one day I can help build things too.

I'm not an expert yet... I'm actually still learning! That's why I visit real construction workers, engineers, architects and safety teams to ask questions and discover how buildings are made.

Along the way I share what I learn with kids across Hawai'i and around the world. Together we will explore:

- Big construction machines



- Job opportunities in the building trades
- Engineering and design
- Safety on construction sites
- How people work together to build a community

I call everyone who follows along my **Construction Crew**, because we are learning together. Maybe one day, you could help build something in Hawai'i too! Hard hats on — let's go learn!

Follow along on Instagram and Facebook: @alohafromhalawa



## MAKING MOVES

ONE TEAM. ONE COMMUNITY. MOVING FORWARD TOGETHER



Please join us in welcoming **Tracey Lesetar-Smith** to the Aloha Stadium Authority Board. With extensive experience in sports business — including leadership roles with Bellator MMA and NASCAR — Tracey brings valuable expertise in staging major sporting events as Hawai'i moves forward with the New Aloha Stadium Entertainment District. Her passion for sports and community will help guide the future of the stadium and the events that bring our islands together.

### Board Reappointments

Congratulations to **Joel Kawachi, Claire Tamamoto, Michael Imanaka and Lloyd Hisaka** on their reappointments to the Aloha Stadium Authority Board. The members were confirmed by the Senate Committee on Economic Development and Tourism on March 3, continuing their service in helping guide the future of the Aloha Stadium site. Through their experience and commitment to public service, these board members help provide oversight and strategic direction for one of Hawai'i's most significant redevelopment efforts. We appreciate their willingness to continue serving and supporting the long-term vision for a district that will benefit the community and the state of Hawai'i for generations to come.



# RAINBOW WARRIORS SET FOR 2026

## UNIVERSITY OF HAWAI'I ATHLETICS CORNER *OUR TEAM. HAWAI'I'S TEAM*

The University of Hawai'i Athletics Department has released the 2026 Rainbow Warriors football schedule, giving fans a preview of an exciting season ahead. The 'Bows will open the season on August 29 at Stanford, before returning home for their first home game on September 5 against UNLV. The 12-game schedule features a mix of non-conference matchups and Mountain West competition, with six home games and six road games planned for the season.

Fans can look forward to another year of supporting the Rainbow Warriors as they take on conference rivals and notable opponents throughout the fall.

To view the full 2026 schedule and game details, read the complete announcement here:

[View The Full Schedule](#)



New Aloha Stadium Entertainment District | 99-500 Salt Lake Boulevard | Aiea, HI 96701 US

[Unsubscribe](#) | [Update Profile](#) | [Constant Contact Data Notice](#)



Try email & social marketing for free!