



*Aloha Stadium*

APRIL 2026 NEWSLETTER

## CELEBRATING HAWAI'I'S CULTURE BUILDING HAWAI'I'S FUTURE

Updates from Aloha Stadium and the New Aloha Stadium Entertainment District  
"Project Progress, Community Highlights and Marketplace News"

### MANAGER'S CORNER

MOVING FORWARD TOGETHER: NASED PROJECT UPDATE



As the New Aloha Stadium Entertainment District (NASED) project moves forward, several milestones reflect steady progress.

Recent demolition work at the stadium site marks a major and highly visible step. In April, crews completed two controlled collapses of the stadium's upper seating sections, including large portions along the makai sideline. Using a method known as "tripping," support structures were strategically removed to allow sections of the stadium to fall safely in a controlled manner.

This phase represents one of the largest demolition efforts to date and is part of a coordinated process that began earlier this year with utility work, hazardous material abatement and structural dismantling. Extensive safety measures and planning were in place throughout the operation. Each milestone — especially the removal of the upper bowl — brings the project closer to site transition and advances the long-term vision for a modern, multiuse district to serve the community and the state of Hawai'i for generations.

The Stadium Authority also convened its monthly board meeting to discuss final steps toward approval of the NASED Master Development Agreement, or MDA, ahead of execution and formal signing. The agreement between the state of Hawai'i and Aloha Hālawā District Partners (AHDP) establishes the framework to guide redevelopment of the site into a mixed-use district anchored by a new multipurpose stadium and 4,500 units of housing.

While work remains, these steps signal continued momentum for NASED. The team remains focused on planning, coordination and community engagement to deliver a new community district that reflects the needs and values of Hawai'i.

Mahalo for your continued support as we move forward together. If you have any questions or concerns please contact us at alohastadium@hawaii.gov or 808-483-2500.

~Michael Yadao, Aloha Stadium



## ALOHA FROM AHDP

**Honoring the memories. Making way for what's next.**

Aloha Stadium reached another major dismantling milestone last week with the controlled collapse of the northwest section of the bowl. The collapse was engineered using a method called tripping, a safe and carefully managed process used to remove structural supports, marking another visible step toward the future New Aloha Stadium Entertainment District.

Representatives from the University of Hawai'i and UH Athletics gathered to observe, including UH President Wendy Hensel, former UH football coach June Jones, head coach Timmy Chang and members of the current staff and team. Their presence made the moment especially meaningful, offering a chance to reflect on the stadium's legacy as a home for Hawai'i's athletes, fans, families and cherished memories.

Our team remains focused on honoring what Aloha Stadium means to our community, while helping bring its next chapter to life. With each step, we move closer to a new gathering place where Hawai'i's next great moments can unfold.

*Aloha Hālawa District Partners*

*Photo: Aloha Stadium bowl during tripping*

## HERE'S THE ANSWER

You asked — we're answering. "Here's the Answer" highlights common

questions and provides clear updates you can trust.

**Q:** Where do the demolition materials go?

**A:** In general, the demolition subcontractor uses a recycling broker that treats steel as a commodity, selling it in bulk at market value and exporting the scrap to the continental U.S. for smelting and processing by recyclers. Once abated and cleared of hazardous materials, general waste — including plastics, wood, rubber, paper, steel and green waste — is taken to the PVT Waste Management Facility on O’ahu. Higher-value materials such as copper, aluminum and structural steel are separated and sold to recyclers or brokers locally and on the continental U.S. Concrete and paving materials are also being evaluated for crushing and potential reuse in the new stadium construction, pending cost-benefit analysis and geotechnical review.

For direct questions, residents may also reach out to us through our email at [alohastadium.hawaii.gov](mailto:alohastadium.hawaii.gov).

[Visit our Website](#)



## RECENT NEWS AND MEDIA HIGHLIGHTS

*A snapshot of recent news and media stories highlighting Aloha Stadium, our community partnerships and progress across the entertainment district.*

Another section of Aloha Stadium came crashing down on April 23 as dismantling continued.

[KHON2 - Read The Story](#)

[HNN - Read The Story](#)

[KITV - Read The Story](#)

[Star Advertiser - Read The Story](#)

# SWAP MEET AND MARKETPLACE

## EXPLORE. ENGAGE. PLAY



## EXPLORE

Public parking is available through Hālawa Gate 3 with easy access via Kahuapaani Street.

\$2 general admission  
\$1 for kama'āina and active-duty military  
Free for keiki 11 yrs. and under

**Know Before You Go**

## ENGAGE

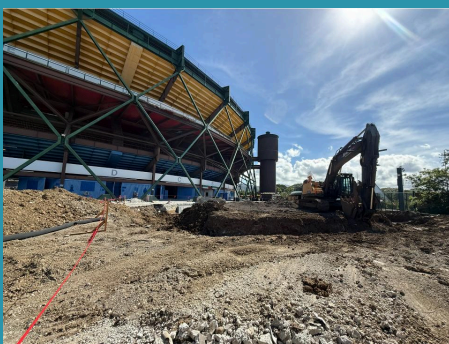
Stay connected so you never miss Marketplace events, featured vendors and activities happening throughout the month.

## PLAY

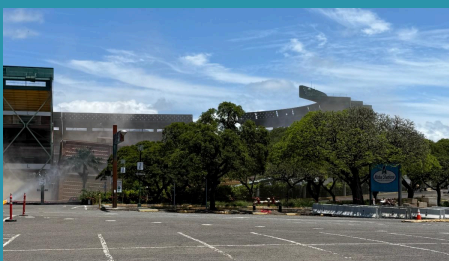
Grab a bite from one of the food trucks and experience the heartbeat of aloha at the Ho'okipa Hale entertainment stage and food court tent, where local artists share the spirit of Hawai'i through music and dance.

## CONSTRUCTION PROGRESS

Progress is happening at the Aloha Stadium site. Follow along through our construction camera as dismantling and site preparation continue to move the New Aloha Stadium Entertainment District (NASD) forward.



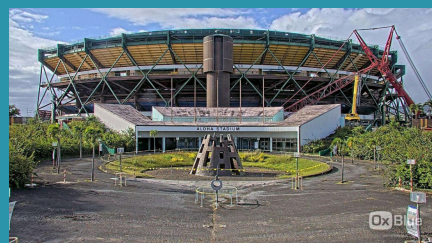
South Concourse



Makai Sideline



Makai Sideline Prep Work



South Endzone Exterior Volcano

# Al Oha FROM HALAWA



## AL OHA'S JOURNEY CONTINUES: EXPLORING CONSTRUCTION AT NASED

Al Oha is back on the move, exploring construction at the New Aloha Stadium Entertainment District (NASED). From learning about early site work to understanding the people and equipment behind a project of this scale, Al Oha's journey continues to highlight career pathways connected to the future of Aloha Stadium.

Through updates shared on Instagram at @AIOhaFromHalawa, Al Oha is showing how planning turns into action by asking questions, sharing interactive activities and exploring what it takes to build a project that will serve the community for generations. The effort helps students and the broader community better understand opportunities tied to the project.

To follow along, a new YouTube channel is now available at [YouTube](#), featuring the latest videos, behind-the-scenes content and educational updates related to NASED. New videos will continue to be released as the project progresses.

Follow along on Instagram, Facebook and now YouTube.



## MAKING MOVES

ONE TEAM. ONE COMMUNITY. MOVING FORWARD TOGETHER

### MAHALO TO OUR PART-TIME TEAM

The Stadium Authority recently hosted a luncheon to recognize and thank its part-time employees for the role they play each day. From parking attendants to general services staff, these team members are often the first people visitors encounter, helping create a safe, organized and welcoming experience for everyone who comes through the gates.

While their work supports daily operations, their impact extends beyond that. Part-time employees help shape



the overall experience at Aloha Stadium, setting the tone for how the community connects with the space as planning continues for the future. Their commitment, professionalism and care contribute to the foundation of what the New Aloha Stadium Entertainment District (NASED), aims to become.

As work moves forward, the collective effort of the entire team, including part-time staff, wholeheartedly supports the development of a district in which the community can take pride.



## HAWAI'I FOODBANK DRIVE

The state of Hawai'i continues to partner with the Hawai'i Foodbank through its annual food and fund drive to support families facing food insecurity. This year's campaign aims to provide hundreds of thousands of meals statewide, as nearly one in three households continue to experience food insecurity.

State of Hawai'i Department of Business, Economic Development and Tourism (DBEDT) employees are supporting the effort by donating canned goods, contributing funds and helping raise awareness. Every contribution helps support local families. To join DBEDT and show your support, scan the QR code. Together, these efforts can help ensure no one in Hawai'i goes hungry.



## UNIVERSITY OF HAWAI'I ATHLETICS CORNER OUR TEAM. HAWAI'I'S TEAM

The University of Hawai'i has named Khalilah Mitchell head coach of the Rainbow Wāhine basketball program, marking a new chapter for the team.

Mitchell has been with the program since 2018 and played a key role in its recent success, including postseason appearances and conference championships. Her promotion provides continuity as the program prepares to join the Mountain West Conference. Known for her commitment to player development and strong connections with student-athletes, Mitchell succeeds longtime head coach Laura Beeman following her retirement and will lead the Rainbow Wāhine into the program's next era.

For more information, visit the UH Athletics news page.

[View The Full Schedule](#)



New Aloha Stadium Entertainment District | 99-500 Salt Lake Boulevard | Aiea, HI 96701 US

[Unsubscribe](#) | [Update Profile](#) | [Constant Contact Data Notice](#)



Try email & social marketing for free!