



*Aloha Stadium*

MAY 2026 NEWSLETTER

## CELEBRATING HAWAI'I'S CULTURE BUILDING HAWAI'I'S FUTURE

Updates from Aloha Stadium and the New Aloha Stadium Entertainment District  
"Project Progress, Community Highlights and Marketplace News"

### MANAGER'S CORNER

MOVING FORWARD TOGETHER: NASED PROJECT UPDATE



As the New Aloha Stadium Entertainment District (NASED) continues to move forward, several important milestones are helping advance the project from planning into visible progress onsite.

Crews continue to remove the south end zone upper deck, carefully dismantling portions of the upper seating area to protect surrounding structural elements which will be reused as part of the new stadium. If you drive by the site, you may also notice the large crane helping with this dismantling work. For some fun facts about this crane be sure to read our *Al Oha* section of the newsletter.

The close of the legislative session also brought encouraging progress for the project. Bills related to stadium naming rights and the Hawai'i Community Development Authority (HCDA) have passed the Legislature and are awaiting the governor's signature. These measures are important to supporting the long-term delivery, financing and coordination of NASED as the project continues to advance.

In addition, I have been authorized by the Stadium Authority to execute the Master Development Agreement (MDA) for the New Aloha Stadium Entertainment District during this month's board meeting, marking a key step forward in the project. The agreement between the state of Hawai'i and Aloha Hālawā District Partners establishes the overall framework to guide redevelopment of the stadium site into a mixed-use district anchored by a new multipurpose stadium, building on earlier agreements executed in 2025 that initiated demolition and site preparation work.

Our team remains focused on safe execution, planning, coordination with project partners and continued engagement with the community as we work to deliver a district that will make Hawai'i proud. Mahalo for your continued support as we move this important project forward.

Mahalo for your continued support as we move forward together. If you have any questions or concerns please contact us at alohastadium@hawaii.gov or 808-483-2500.

~Michael Yadao, Aloha Stadium



## ALOHA FROM AHDP

**Building for the next generation.**

Stanford Carr recently sat down with *Pacific Business News* to discuss the planning, preparation and people involved in the New Aloha Stadium Entertainment District. Stanford reflected on the teamwork required to honor the memories of Aloha Stadium while creating a new gathering place designed to serve Hawai'i for decades to come.

Under Stanford's leadership, a new generation of local leaders is helping shape what comes next, including Kaloa Robinson, Sarah Agnew-Miller and Stanford's sons, Stanford and Dustin.

"It takes a village to build a village."

Their involvement reflects the depth of collaboration and care necessary to move a project of this scale forward. As work continues, Aloha Hālawa District Partners remains focused on celebrating Hawai'i's culture and building Hawai'i's future. Read the full [Pacific Business News feature here](#).

*Aloha Hālawa District Partners*

## HERE'S THE ANSWER

**You asked — we're answering. "Here's the Answer" highlights common questions and provides clear updates you can trust.**

**Q: How is the new stadium being funded and will additional taxpayer funding be needed?**

**A:** The overall New Aloha Stadium Entertainment District (NASED) is being delivered as a public-private partnership, or P3 project. This means the state and a private development partner work together to deliver the project, with the private partner responsible for key elements of design, construction, operations and long-term maintenance.

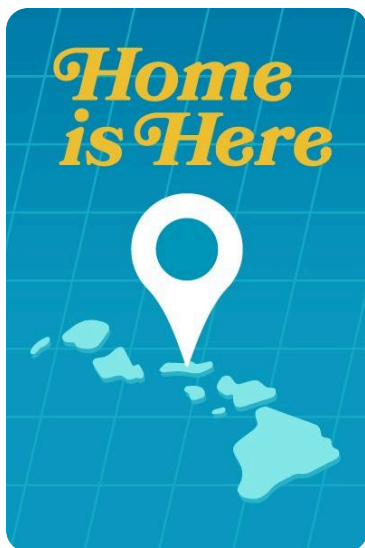
The state has appropriated \$350 million toward the new stadium, and the developer is responsible for any additional funds needed to build it. This structure is intended to reduce the state's long-term financial responsibility while ensuring the facility is operated and maintained over time.

It is also important to note that Aloha Stadium was largely self-sustaining over the past 49 years and generated its own operating funds. However, unsuccessful capital improvement project requests over the years meant there were not enough additional funds to keep up with major maintenance needs.

That is one reason NASED is structured as a design, build, operate and maintain project. Rather than placing ongoing repairs and maintenance back on the state, the agreement is designed to ensure the stadium is properly maintained as part of the long-term project structure.

If the state had chosen to renovate the existing stadium, those costs — along with annual maintenance and repair expenses — would have remained the responsibility of taxpayers. The P3 model helps create a path to deliver a new stadium while better managing long-term costs and responsibilities.

For direct questions, residents may also reach out to us through our email at [alohastadium@hawaii.gov](mailto:alohastadium@hawaii.gov).



## RECENT NEWS AND MEDIA HIGHLIGHTS

*A snapshot of recent news and media stories highlighting Aloha Stadium, our community partnerships and progress across the entertainment district.*

### PBS Hawai'i Documentary: Aloha Stadium

PBS Hawai'i's 30-minute documentary, *Aloha Stadium: Home is Here*, is now available to watch. The special takes viewers back in time through the storied history of one of Hawai'i's most iconic gathering places, sharing the generational memories, emotional moments and community connections that have made Aloha Stadium more than a venue.

As plans for the future of the site continue to come into focus, the documentary offers a look at where the stadium has been and why it continues to hold a special place in the hearts of so many. From unforgettable games and concerts to graduations, family traditions and community events, *Aloha Stadium: Home is Here* honors the stadium's legacy while looking ahead to its next chapter.

[Watch the documentary here](#)



# SWAP MEET AND MARKETPLACE

## EXPLORE. ENGAGE. PLAY

### EXPLORE

Public parking is available through Hālawa Gate 3 with easy access via Kahuapaani Street.

\$2 general admission  
\$1 for kama'āina and active-duty military  
Free for keiki 11 yrs. and under

[Know Before You Go](#)

### ENGAGE

Stay connected so you never miss Marketplace events, featured vendors and activities happening throughout the month.

### PLAY

Grab a bite from one of the food trucks and experience the heartbeat of aloha at the Ho'okipa Hale entertainment stage and food court tent, where local artists share the spirit of Hawai'i through music and dance.

## CONCERT ANNOUNCEMENT

### TMR EVENTS Rebel SoulJahz

August 8 4pm (doors open) 7pm (concert)

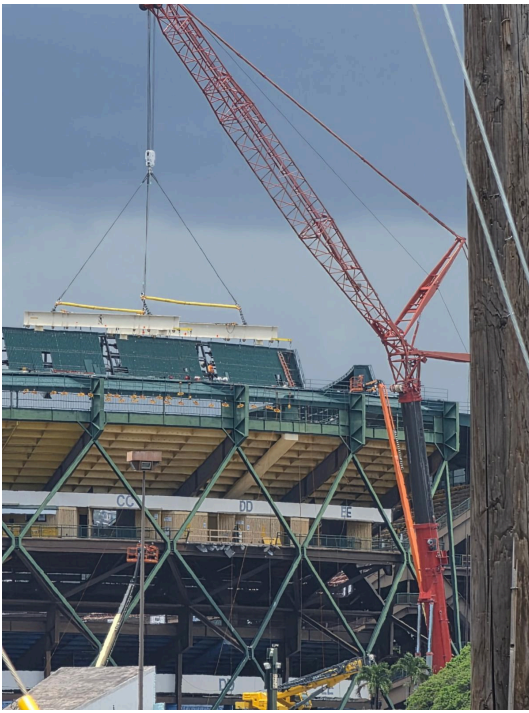
Get ready for a night of island reggae as Rebel SoulJahz takes the stage at Aloha Stadium for their return after a 2-year hiatus with their "Back 2 My Roots" featuring special guest New Zealand's Sons of Zion.

Known for their smooth sound and locally rooted music, Rebel SoulJahz continue to be a favorite across Hawai'i, bringing together audiences of all ages. Expect a mix of fan favorites and songs you know you going sing along to, all in a laid-back setting that feels like home. Whether you've been following Rebel SoulJahz for years or just looking for something fun to do, this is one night you don't want to miss. [Click here for tickets](#)

## CONSTRUCTION PROGRESS

Progress is happening at the Aloha Stadium site. Follow along through our construction camera as dismantling and site preparation continue to move the New Aloha Stadium Entertainment District (NASSED) forward.

[CONSTRUCTION CAM](#)



***Al Oha***  
**FROM HALAWA**



## AL OHA'S JOURNEY CONTINUES: EXPLORING CONSTRUCTION AT NASED

Summer is just around the corner, but Al Oha continues to grow as a place-based learning initiative inspired by the New Aloha Stadium Entertainment District (NASED) project. Through short, engaging video modules, keiki and families can follow the real phases of the NASED buildout, from planning and site preparation to construction, sustainability, technology, operations and community impact.

Al Oha makes NASED a “living classroom” beyond traditional school walls, creating fun opportunities for learning at home. Whether a keiki is curious about engineering, construction, design, environmental protection, technology or the projects that shape everyday life, Al Oha offers an age-appropriate way to learn, explore and imagine the future.

By connecting a once-in-a-generation community project to education and career awareness, Al Oha helps inspire the next generation of builders, thinkers, problem-solvers and leaders across Hawai'i.

Follow along on Instagram,  
Facebook and now YouTube.



### DID YOU KNOW...

The Crane being used to dismantle the Aloha Stadium is called the **DEMAG AC 700** and has a lifting capacity of **800 US TONS.**

800 TONS

That's about the weight of **20** fully grown humpback whales  
or **4.8 MILLION** spam musubi  
or **1.6 MILLION** regulation sized footballs

Its main boom alone reaches nearly **200 feet** and added jib configurations it can reach up to **490 feet.**  
That is over half the height of **Diamond Head (Lē'ahi).**

## MAKING MOVES

ONE TEAM. ONE COMMUNITY. MOVING FORWARD TOGETHER

### Ha'aeo: Pride in Public Service Month

May is recognized in Hawai'i as “Ha'aeo: Pride in Public Service Month,” a time to honor the dedication, compassion and excellence of public employees who serve communities across the state. The proclamation recognizes the important role state employees play in supporting the safety, health and well-being of Hawai'i's residents and visitors, while uplifting communities through purpose, perseverance and aloha.

At Aloha Stadium, that spirit of public service has been part of the facility's story for generations. Stadium staff supported decades of football games, concerts, graduations, community celebrations and major events that brought people together from across Hawai'i. Their work behind the scenes from operations and maintenance to parking, security, guest services and administration helped create lasting memories for families, fans, athletes, vendors and visitors.



Today, that same commitment continues through the Aloha Stadium Swap Meet & Marketplace, temporary events and ongoing site operations as the stadium enters a new chapter. As dismantling progresses and planning continues for the New Aloha Stadium Entertainment District (NASED), staff remain focused on safety, service and stewardship of the site. Their dedication helps connect the stadium's past, present and future.

As we recognize "Ha'aheo: Pride in Public Service Month", we extend our mahalo to the Aloha Stadium team for its hard work, adaptability and continued commitment to serving the community. Their efforts have helped shape the stadium's legacy and will continue to support new opportunities as NASED moves forward.



## UNIVERSITY OF HAWAII ATHLETICS CORNER OUR TEAM. HAWAII'S TEAM

### UH Volleyball Pride Runs Deep Across Hawai'i

The Rainbow Warriors men's volleyball team brought home another national championship, defeating UC Irvine in four sets at Pauley Pavilion in Los Angeles to capture the 2026 NCAA men's volleyball title. The win marked the program's third national championship and capped a historic 30-win season for the University of Hawai'i men's volleyball team.

That volleyball success continues to resonate across the islands, from college athletics to high school programs. The Wade family's coaching legacy remains strong, with Charlie Wade leading the University of Hawai'i to another national title and his son, Makana Wade, guiding Le Jardin Academy's boys' volleyball team to its first state title. Despite stepping into the role shortly before the season began, Makana Wade quickly earned the trust of his players and helped lead the team to a historic finish. Congratulations to all the players and the entire Wade Ohana!



[NCAA Recap Story Link](#)



New Aloha Stadium Entertainment District | 99-500 Salt Lake Boulevard | Aiea, HI 96701 US

[Unsubscribe](#) | [Update Profile](#) | [Constant Contact Data Notice](#)



Try email & social marketing for free!